

***CP-ONE PLUS***





IDENTITY  
OF  
OP-ONE PLUS

# T h i n k i n g   o f   A l l

Thinking of Communication

Thinking of Patient Comfort

Thinking of Operator Comfort

## CP-ONE PLUS: Thinking of All

A dental unit thought out from all perspectives.

The dental chair and unit are the key factors in ensuring safe care with accurate diagnosis, precise treatment and reliable counseling.

The CP-ONE PLUS was designed by incorporating doctors' requirements and desires one by one, from the treatment space all the way down to minute details that will be recognized through doctors' fingertips.

An ideal treatment environment, the CP-ONE PLUS is the **Thinking of All** dental chair and unit, the answer to doctors' aspirations, made possible only through the fusion of the expertise and technological leadership of Takara Belmont.



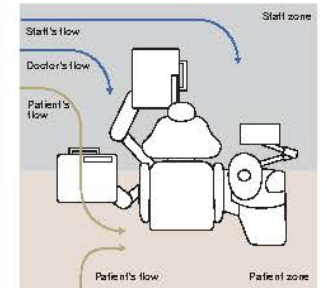
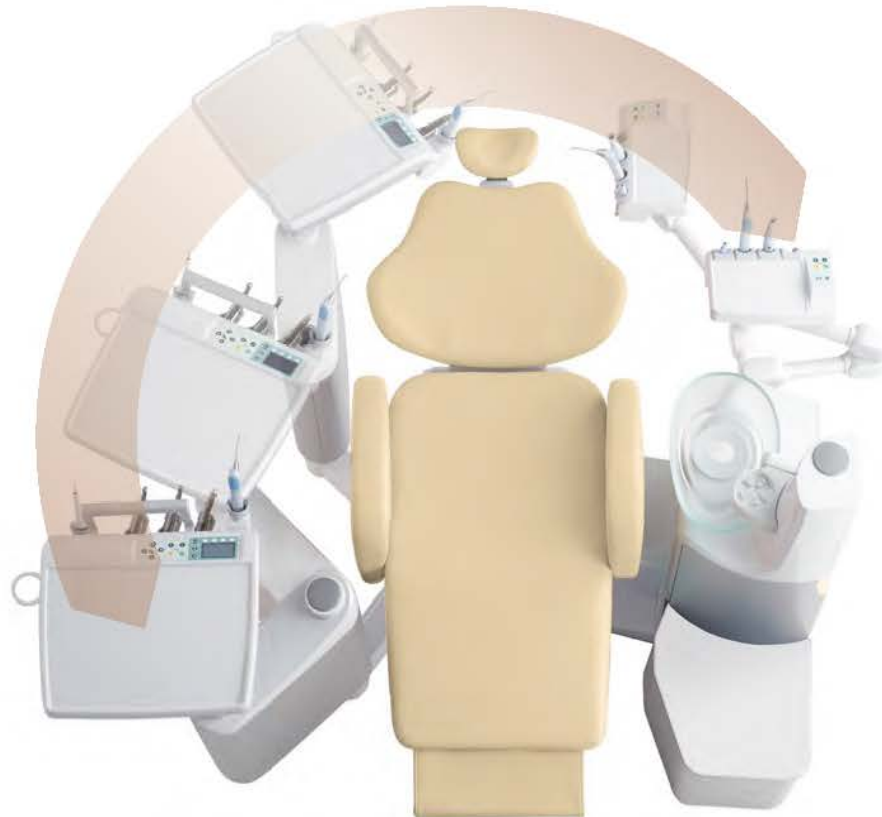
# Thinking of Communication

The first step to create a comfortable dental space is to know the right flow of patients and operators. CP One Plus creates an effective operation space combined with comfort and functionality by centering the patient's mouth and carefully calculating the movable range of doctor and assistant table.

Patient's entry into the room to sit on a chair. Treatment activities involving various movements by operators and patients. The key to success lies in managing them into one streamlined combination of flow.

## Wide range of positioning

Inherited from the CP-ONE is the arc delivery system; the doctor table can be smoothly moved for the 6 to 2 o'clock position. Furthermore, with the expanded assistant's area, it is compatible with 2-hand, 4-hand, and 6-hand operations.



Example of flow  
Create a smooth treatment flow, "Flow line separation"

By dividing the patient zone and staff zone, you can avoid the interference and create a comfort space for the patient when he/she enters. You can also mitigate the patient's fear by sliding the doctor table to keep the handpieces away from their sight. Thanks to the separation of staff flow, cross infection is also preventable.



Thanks to its folding legrest chair, the doctor can stand or sit directly in front of the patient, the doctor can take a face to face communication and also perform an accurate check-up.

Standard arm : 128"

Longer arm : 188"

\*Refer to page 11





REMOVABLE  
ARMREST

LOW  
SEAT  
HEIGHT

LEG REST  
HEATER

# Thinking of Patient Comfort

The CP-ONE PLUS chair has been ergonomically and luxuriously designed to provide true comfort for all patients in addition to reliability.

The CP-ONE PLUS is not only a dental chair and unit, but also a communication tool that builds trust.



## Low initial height of 400 mm

Sitting down and getting up is easier for children, the elderly and those with limited mobility, as the chair can be accessed either from the side or directly from the front.



## Shockless movement

The slow slide valve eliminates any jarring movements of the chair, keeping the patient calm and comfortable for a stress-free treatment.



## 90-degree eye-contact position

allows the viewpoints of both the patient and the doctor to converge. This position is conducive to a natural, stress-free atmosphere for discussion and provides for relaxed, through communication.



## Comfortable headrest movement

The axis power headrest is designed based on ergonomic analysis of the head and its movement.



## Separation of Communication monitor's and doctor table's movement

The monitor mounted on the doctor table will encourage more effective communication, especially in terms of informed consent. When you are counseling, you can move the doctor table away from the patient's sight and communicate with them at the ideal eye contact position.  
(The monitor bracket is an option and mountable only on the standard arm doctor table type.)





# Thinking of Operator Comfort

The CP-ONE PLUS not only addresses operators' daily requirements, but also meets unfulfilled demands. The doctor table provides an extra smooth transfer of instruments into and from the holder, a high level of visibility with the organic EL display, and a simple interface for various controls that encourage the doctor to concentrate his/her treatment without stress.



## Hydraulic-powered headrest

The doctor can easily adjust the headrest position from the table or stick switch.



## Stick switch for chair and/or headrest control

Easy to operate chair (manual and/or preset position) and/or headrest controls keep hands sterile. One is standard, and an extra is optional to provide further functionality.



## Realization of intuitive and versatile operation

The disc of foot controller wired to the chair base is operated in two ways, stepping or rotating. Further more the disc can be controlled from any angles. These different ways of control makes operation comfortable and smoother. The rotation speed of the motor can be adjusted by the sliding the pedal and degree of stepping on the pedal.



## High stroke 400mm

High stroke chair is suitable for surgical operation and extraction. Our original mechanism made it possible to create the low initial height chair up to 800mm height.



## Roll up leg rest creates more space for doctor at 6 o'clock diagnosis

The doctor can approach more to the patient thanks to the roll up type of leg rest.

# Doctor Table

## HANDPIECE



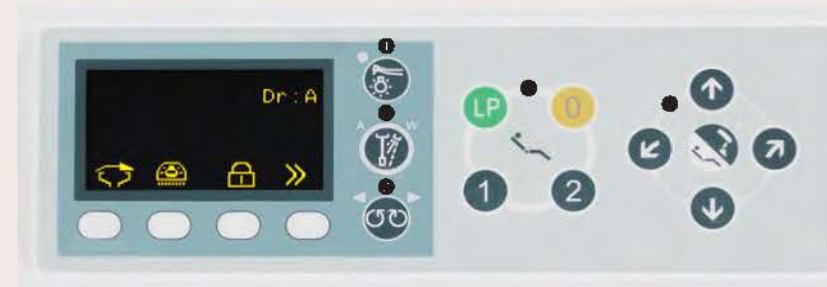
### HANDPIECE DELIVERY

The redesigned handpiece holder is adjustable horizontally and vertically, which ensures that the doctor always has his tools within easy reach. Two types of handpiece storage are available, holder type and place type. Both types are detachable and autoclavable for hygiene control. The height of the new doctor table is easily adjustable (100 mm) without any special tools.

## New control panel

Versatile function with a simple, easy to operate control panel and highly viewable organic EL display

### SIMPLE INTERFACE



### Membrane Switch

- Handpiece light On/Off
- Handpiece air/water control
- Micromotor direction control
- ① Chair control (preset position)
- ② Chair and headrest manual control

### DIGITAL INDICATOR



**High speed turbine control**  
You can choose the start rotational speed of turbine from four types.  
(LL→LOW→STD→HI)



**Micromotor control**  
Highly configurable power control between 2,000–40,000 rpm.



**Ultrasonic scaler control**  
Power control by 10 steps (1→10) for Scaling/Perio/Endo mode respectively

# Cuspidor Bowl and Assistant Holder

LED ILLUMINATION  
(option)

Motorized cuspidor bowl  
(option)

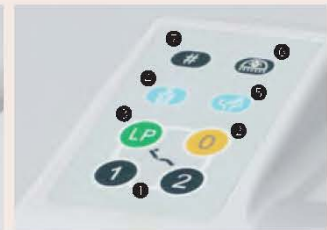
LED shows the safety lock status, the hand piece coolant water volume and the rotational direction of micro motor. The dentist can concentrate on the treatment by recognizing the status at sight.

Illumination pattern

Chair lock/Hand piece light	Coolant water volume	Micro motor Forward/Reverse mode
<div>ON Safety switch active</div> <div>OFF Normal safe conditions</div> <div>ON Handpiece light is lit</div> <div>OFF Handpiece light is off All handpieces are in the holder</div>	<div>3 ON Water spray volume from 1 to 3 levels</div> <div>2</div> <div>1 OFF Air only/ water volume off All handpieces are in the holder</div> <div></div>	<div>ON Green/ Rotational direction is forward</div> <div>OFF Orange/ Rotational direction is reverse</div> <div>Picked up all handpieces except Micro motor</div> <div>All handpieces are in the holder</div>



Enhancing the convenience of assistant work. Handpiece holder is detachable and autoclavable. Up to 4 hand pieces are mountable. The maximum load on the assistant tray is 1kg. You can put the apex locator or the caries diagnostic tester on the tray and help assistants to work more flexible.



- 1 Chair preset switch
- 2 Chair auto return switch
- 3 Chair last position switch
- 4 Cup filler switch
- 5 Bowl flush switch
- 6 Dental light switch
- 7 Extra switch



Large cuspidor bowl

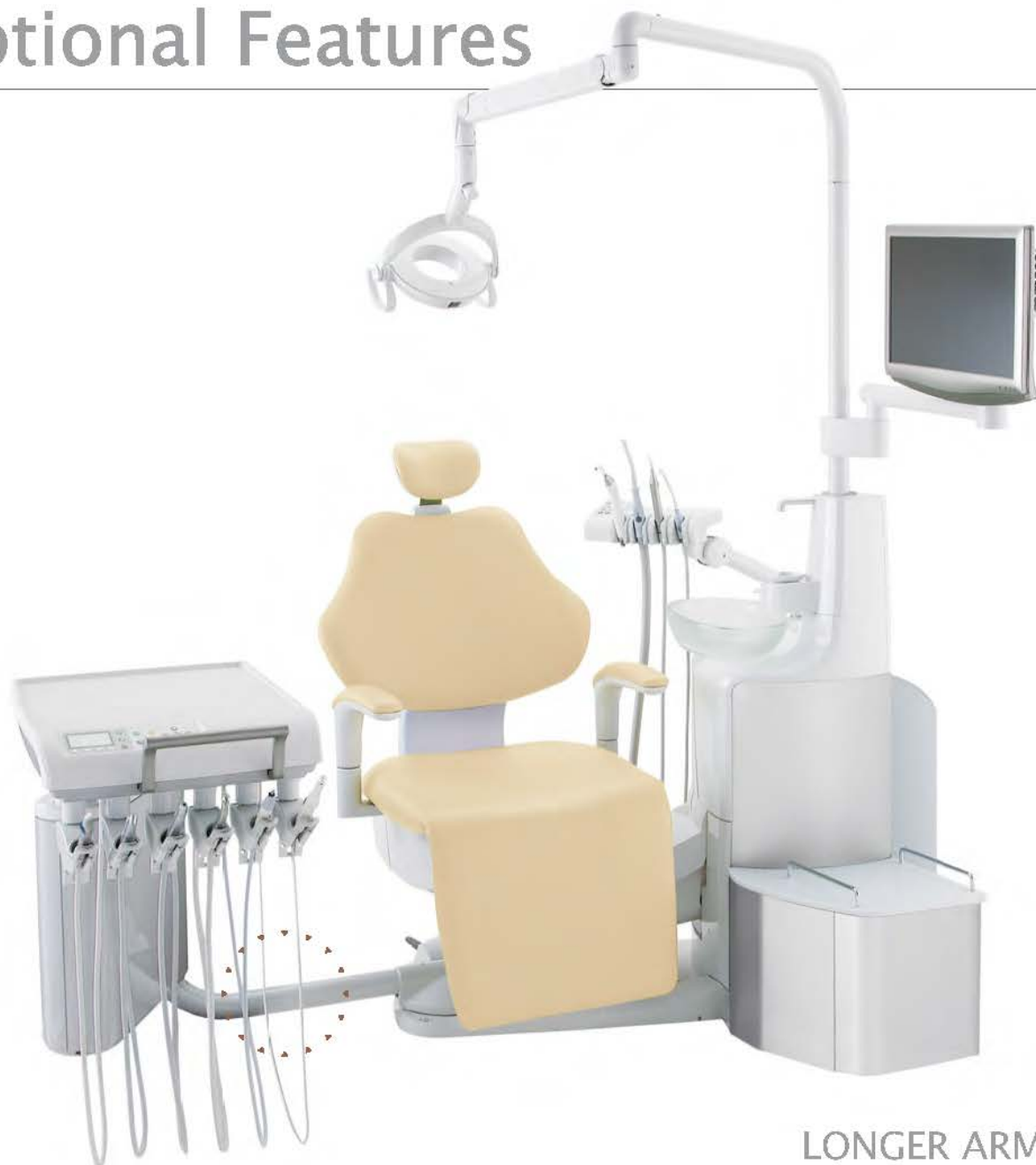
Newly designed cuspidor bowl made it possible to prevent from water's spattering and blood sticking. The patient can rinse the mouth at natural sitting position thanks to the rotatable bowl.



Weight sensor type cup filler (option)

Various Types of cups (paper, plastic, stainless) can be used.

# Optional Features



The table of longer arm type can rotate at 180 degree.  
The doctor can easily reach handpieces at 6 o'clock position.

LONGER ARM TYPE



# Dental Light

Articulate balance arm for assistant holder



Monitor bracket on light post



Monitor bracket at the doctor table side



Large cuspidor unit cover for amalgam separator



Amenity box on junction box



Only mountable on the standard arm type.

Clean water system



Slim type armrest



## 900 Dental Light Type 920 (LED)

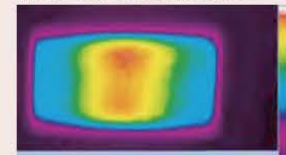


### Basic Specifications

- Light intensity: 4,000–35,500 lux  
stepless control
- Light intensity composite mode: 5,500 lux
- Color rendering index: more than 90
- Light pattern: 85 x 155 mm



- Color temperature:  
5,000 Kelvin at any intensity



- LED modules: 10
- Power requirement: 100–240 VAC
- Focal distance: 650 mm



# Lineup

## LINEUP

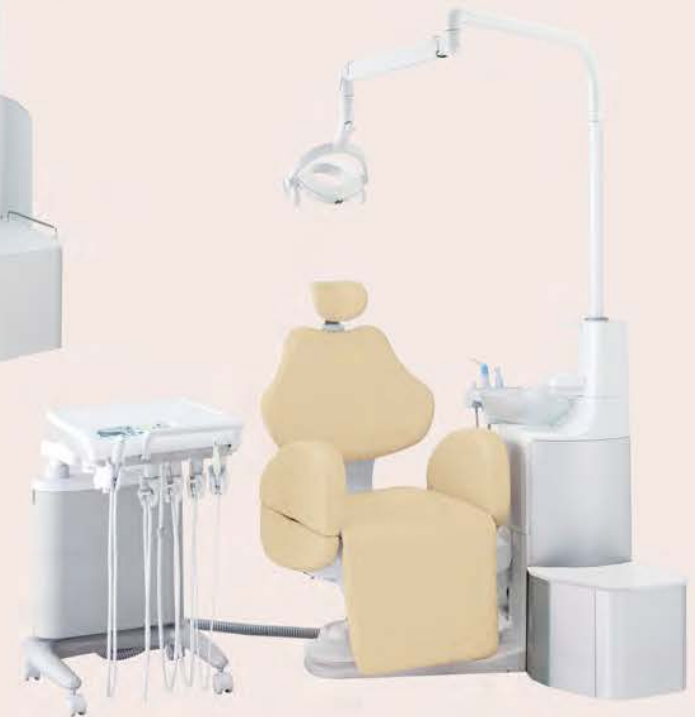
BASE MOUNT TYPE  
STANDARD ARM TYPE



BASE MOUNT TYPE  
LONGER ARM TYPE



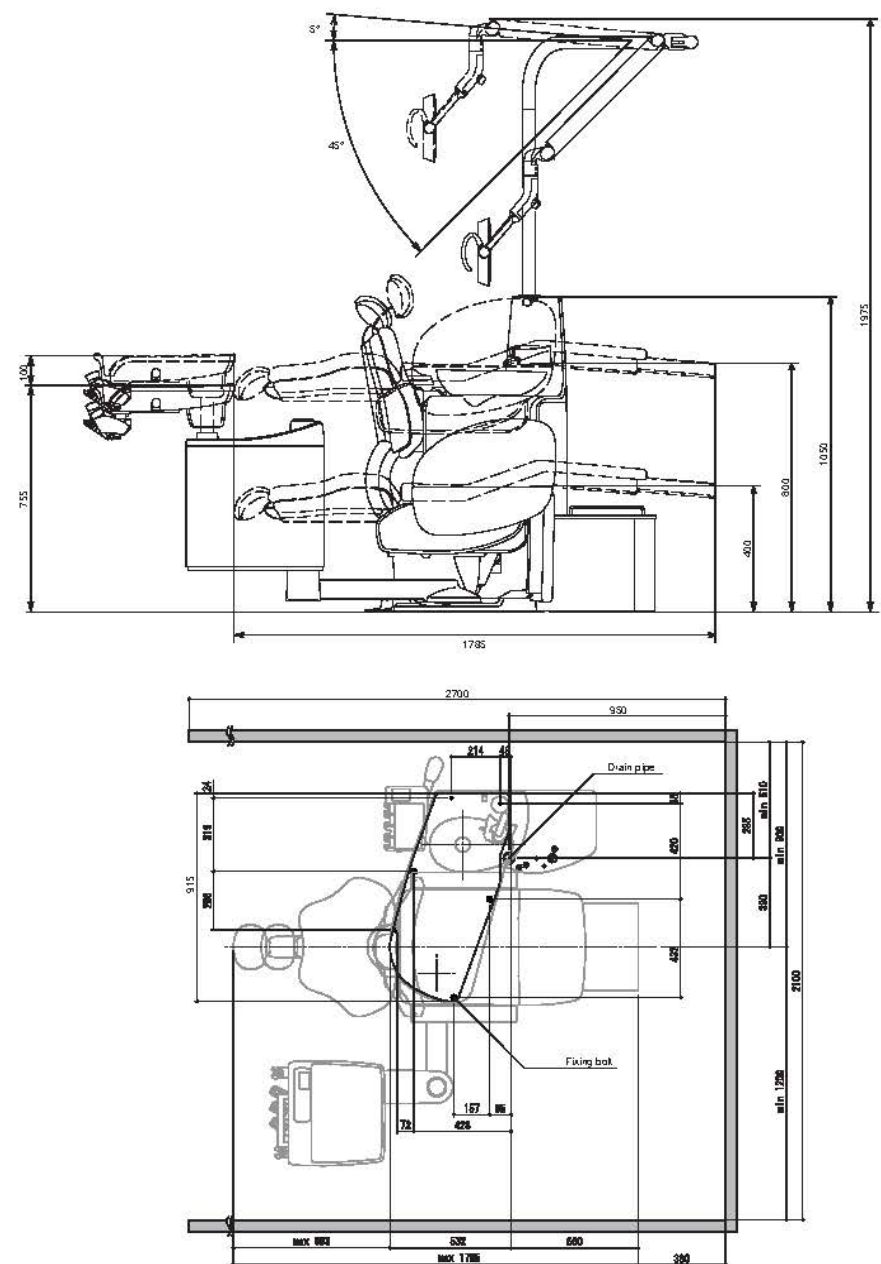
CART TYPE



## COLOR VARIATION



## CP-ONE PLUS DIMENSIONS



The specification and colors are subject to change without notice.  
The handpieces depicted throughout this brochure are not necessarily included.



Takara Belmont Corporation

2-1-1, Higashishinsaibashi, Chuo-ku, Osaka 542-0083, Japan

TEL: +81-6-6213-5945 FAX: +81-6-6212-3680 <http://www.takarabelmont.co.jp/global/>

Names of Components

Dental Unit & Chair : CP-ONE PLUS

Dental Chair : CP-ONE PLUS CHAIR

Dental Unit : CP-ONE PLUS UNIT / CP-ONE PLUS UNIT WITH ACCESSORIES

Dental Light : 900 DENTAL LIGHT

900 DENTAL LIGHT TYPE 920 / 900 DENTAL LIGHT TYPE AL-920

900 DENTAL LIGHT TYPE 920 WITH ACCESSORIES

701 DENTAL LIGHT

DENTAL LIGHT MODEL 720S

DENTAL LIGHT MODEL 720S WITH ACCESSORIES